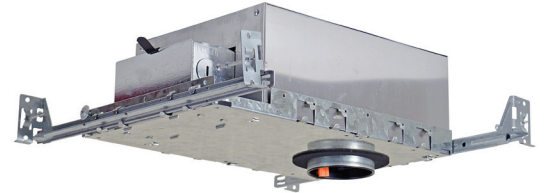


SKU: A2/LED/IC/AT

FEATUERS

- Galvanized steel construction plaster frame-in with J-Box and captive hanger bar with real nail.
- LED engine mounted
- Accessible to LED engine from below the ceiling

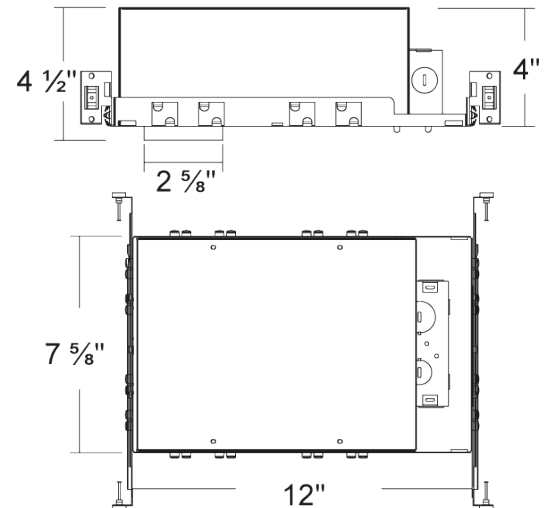


SPECIFICATIONS

- ≥80 or ≥90 CRI
- Accommodates 120 volts AC at 60Hz
- Dimmable with most standard incandescent, magnetic low voltage and electronic low voltage dimmers.
- 2700K, 3000K, 4000K, 5000K available
- 120-277V available (Dimmable at 120V only).
- Long life LED chips guaranteed up to 50,000 hours.

LISTINGS

- cULus Listed
- Energy star qualified
- Wet locations (Not suitable for coastal/salt water area)
- Damp locations
- RoHS compliances
- Tested in accordance with IESNA LM79 & LM80
- Meets state of California title 24 requirement



| | |
|---------------|--|
| Project: | |
| Contact: | |
| Location: | |
| Fixture Type: | |

| Quantity | Notes |
|----------|-------|
| | |